

U S 4 1 R O W L A N D S C A P E



**FORT
MYERS**

#city of palms



Our city...

01 LOCATION MAP

02 TRANSITION ZONES

03 PLANT PALETTE

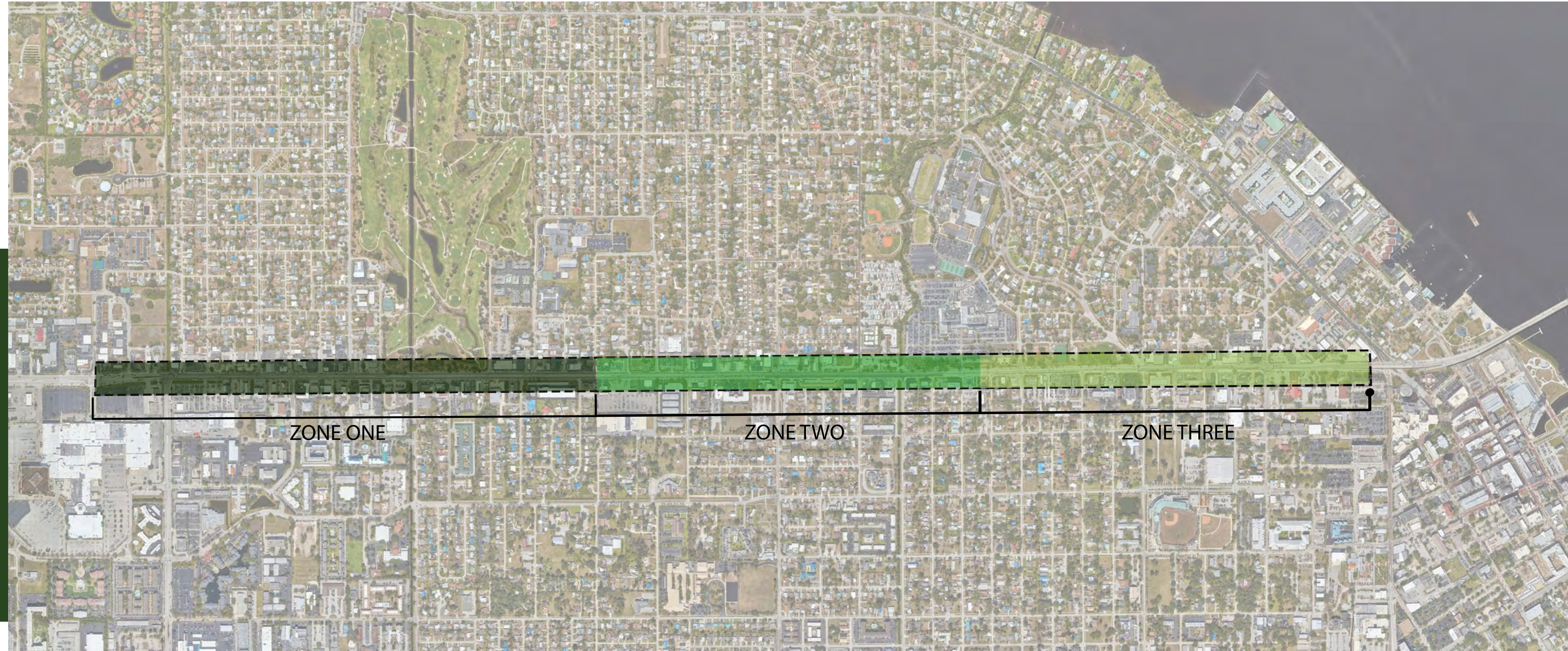
04 HARDSCAPE ELEMENTS

LOCATION MAP

US 41 in Fort Myers, Florida, serves as a vital artery connecting the city's downtown area with neighboring communities and popular tourist destinations like Sanibel Island and Naples. This thoroughfare experiences heavy traffic throughout the day, particularly during peak hours and tourist seasons.

US 41 features varying median conditions along its stretch. Certain sections of US 41 may exhibit less than optimal median conditions, characterized by sparse or unkempt landscaping, outdated vegetation, or neglected maintenance. These areas can detract from the overall aesthetic appeal of the roadway, impact biodiversity, and potentially pose safety hazards due to reduced visibility or overgrown vegetation obstructing sight lines. The median conditions are crucial for enhancing aesthetics, promoting biodiversity, and ensuring safety by optimizing visibility and minimizing maintenance challenges.

US 41 now...



ZONE ONE



TRANSITION ZONES

The first transitional zone seamlessly merges existing plantings with updated vegetation, creating a harmonious blend of old and new elements. Thoughtful plant selection and strategic placement ensure visual continuity, while sustainable practices support long-term vitality.

02



Orange Geiger Tree



Green Buttonwood



Silver Saw Palmetto



Florida Thatch Palm



Coontie



Perennial Peanut

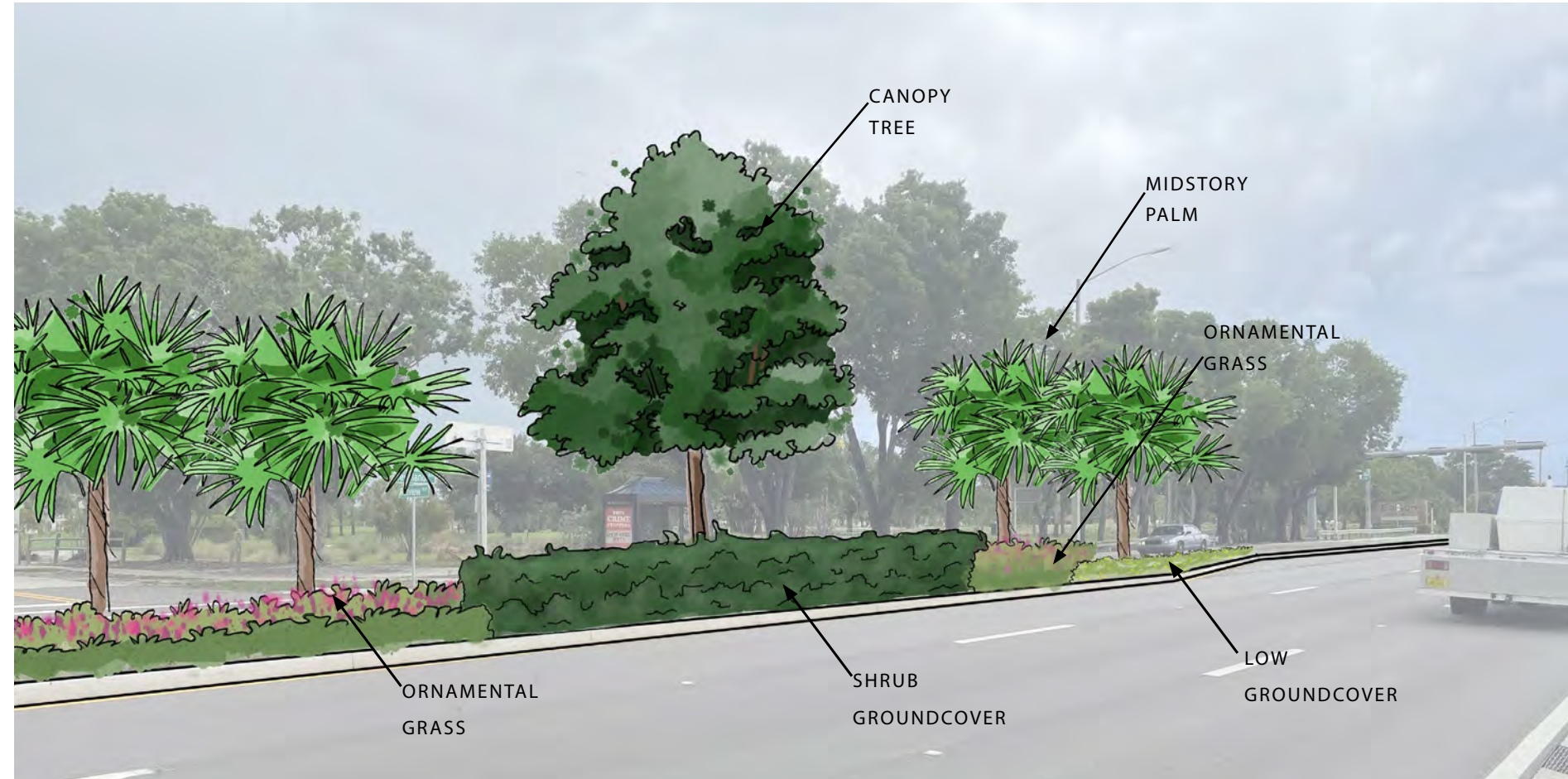


Fakahatchee Grass

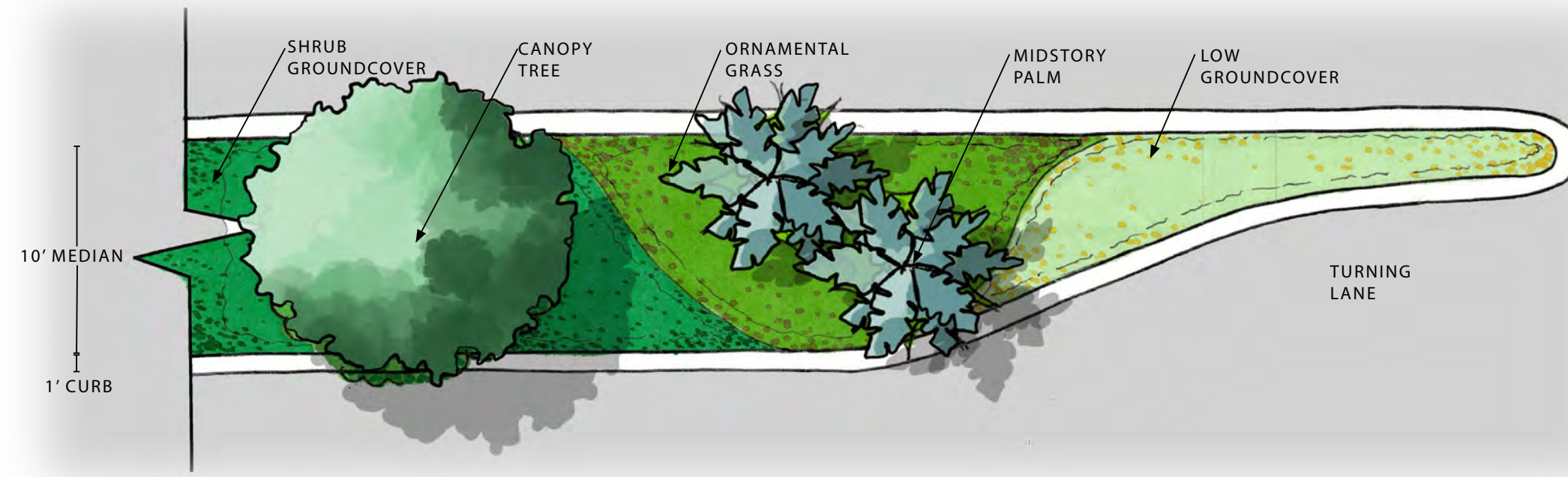


Pink Muhly Grass

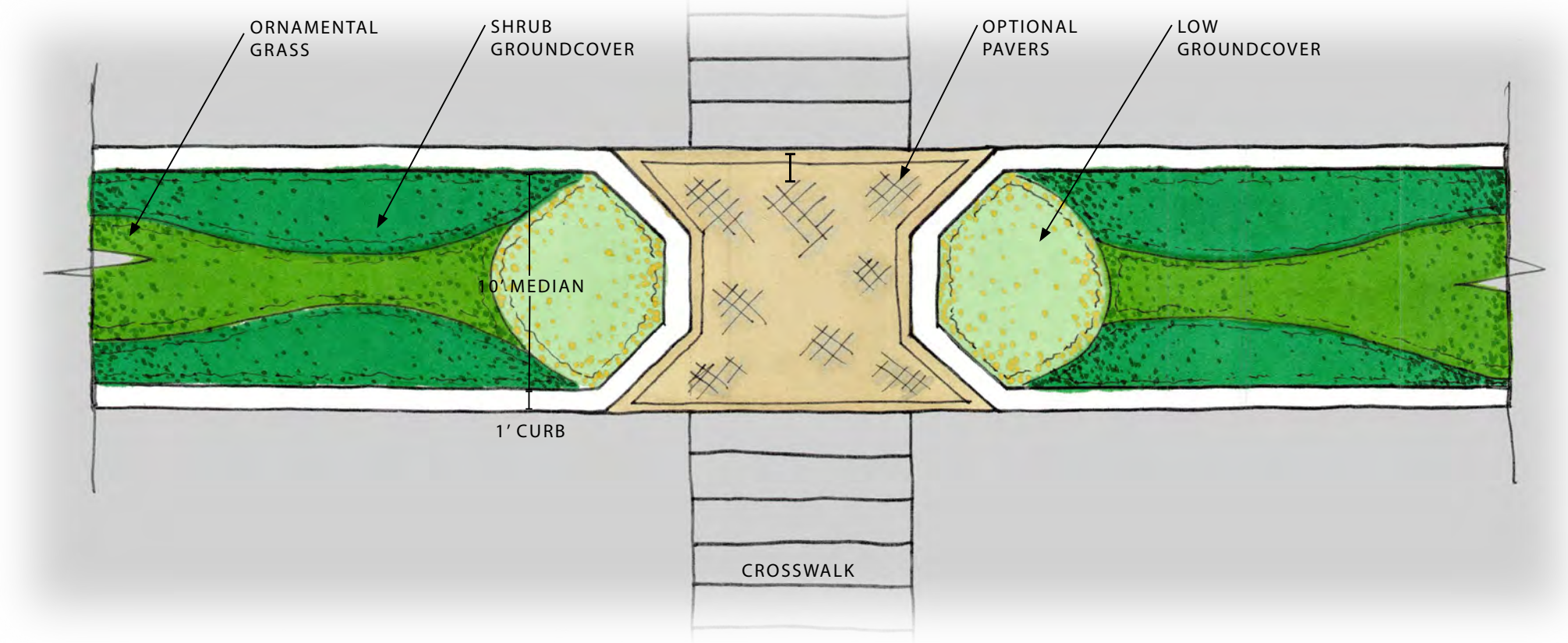
ZONE ONE



CONCEPTUAL ELEVATION



CONCEPTUAL TURN LANE MEDIAN



CONCEPTUAL CROSSWALK MEDIAN

ZONE TWO



TRANSITION ZONES

The second transition zone ushers in a modern planting design, blending existing and zone one plantings. This zone harmoniously combines tradition with innovation, creating an inviting landscape that reflects the evolving character of the area.

02



White Geiger Tree



Pigeon Plum



Silver Saw Palmetto



Florida Thatch Palm



Dwarf Carissa



Blue Daze

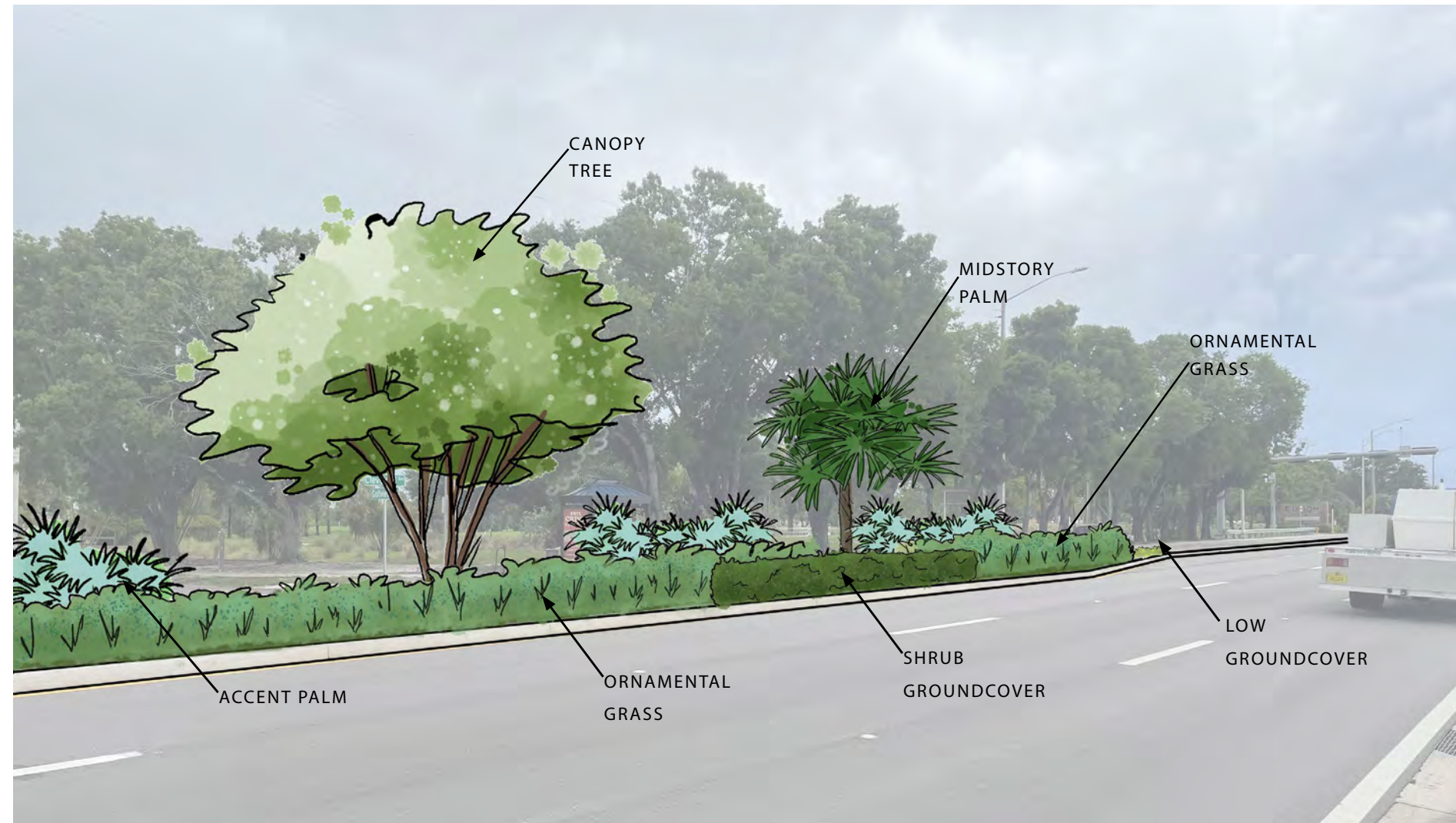


Fakahatchee Grass

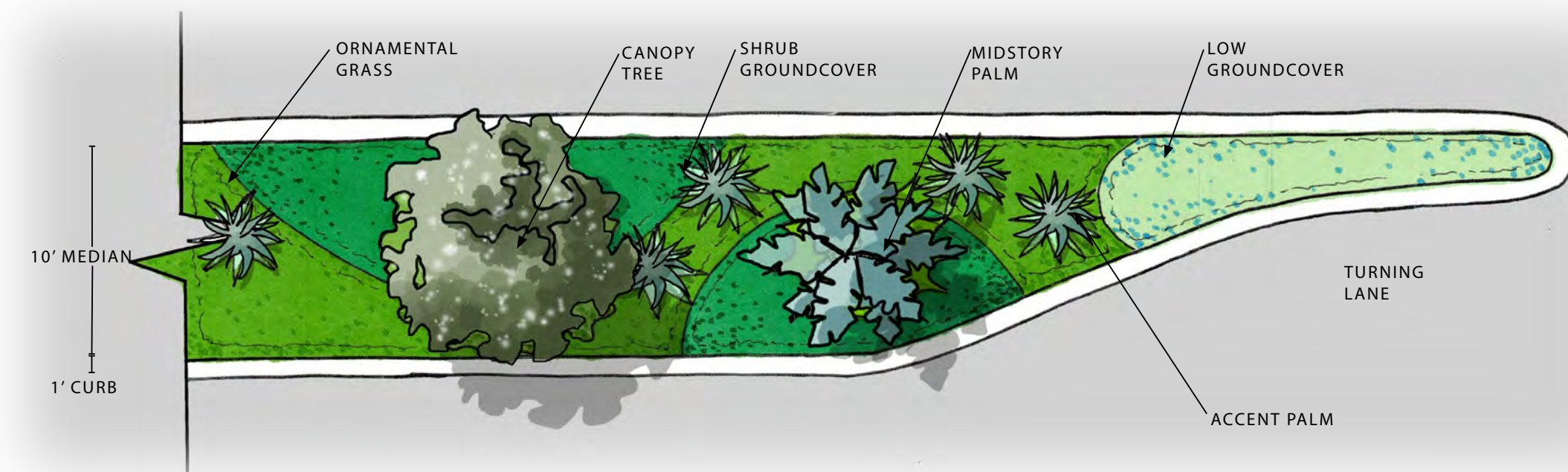


Pink Muhly Grass

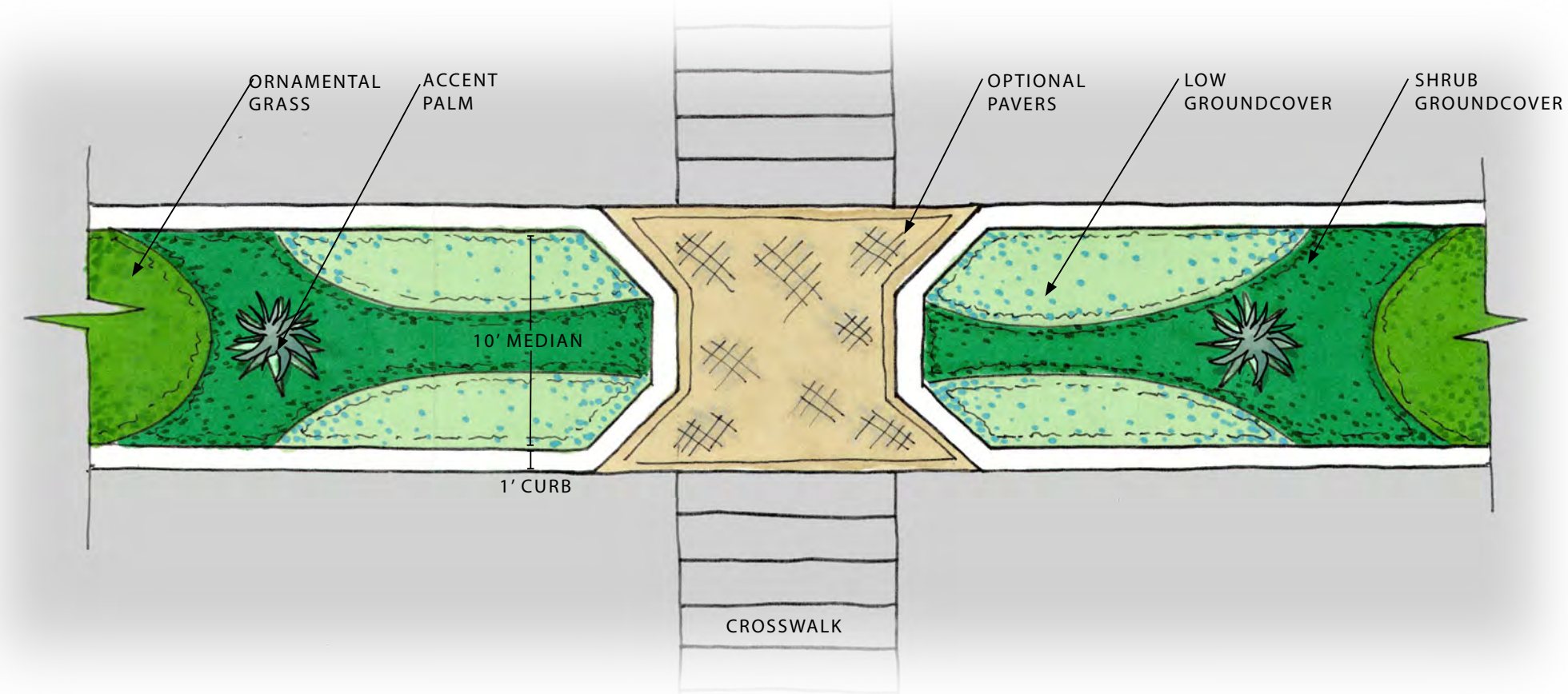
ZONE TWO



CONCEPTUAL ELEVATION



CONCEPTUAL TURN LANE MEDIAN



CONCEPTUAL CROSSWALK MEDIAN

ZONE THREE



TRANSITION ZONES

The third transition zone acts as a captivating gateway into downtown Fort Myers. Lush greenery and vibrant floral displays create a welcoming atmosphere, inviting visitors to explore the heart of the city. With its seamless flow and captivating allure, this median zone welcomes travelers into downtown Fort Myers.

02



Bahama Tabebuia



Pigeon Plum



Silver Saw Palmetto



Florida Thatch Palm



Horizontal Cocoplum



Panama Rose

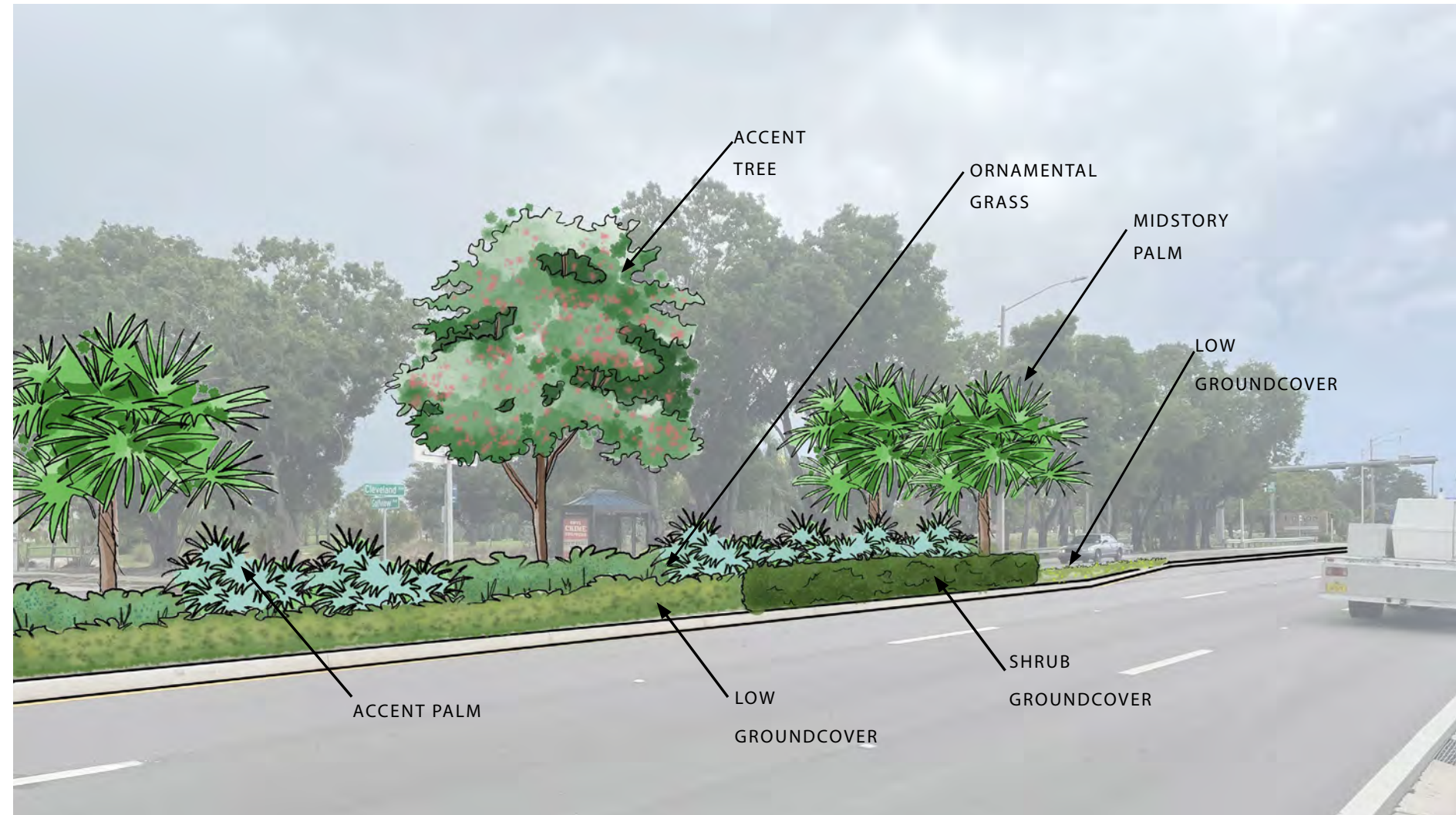


Blue Daze

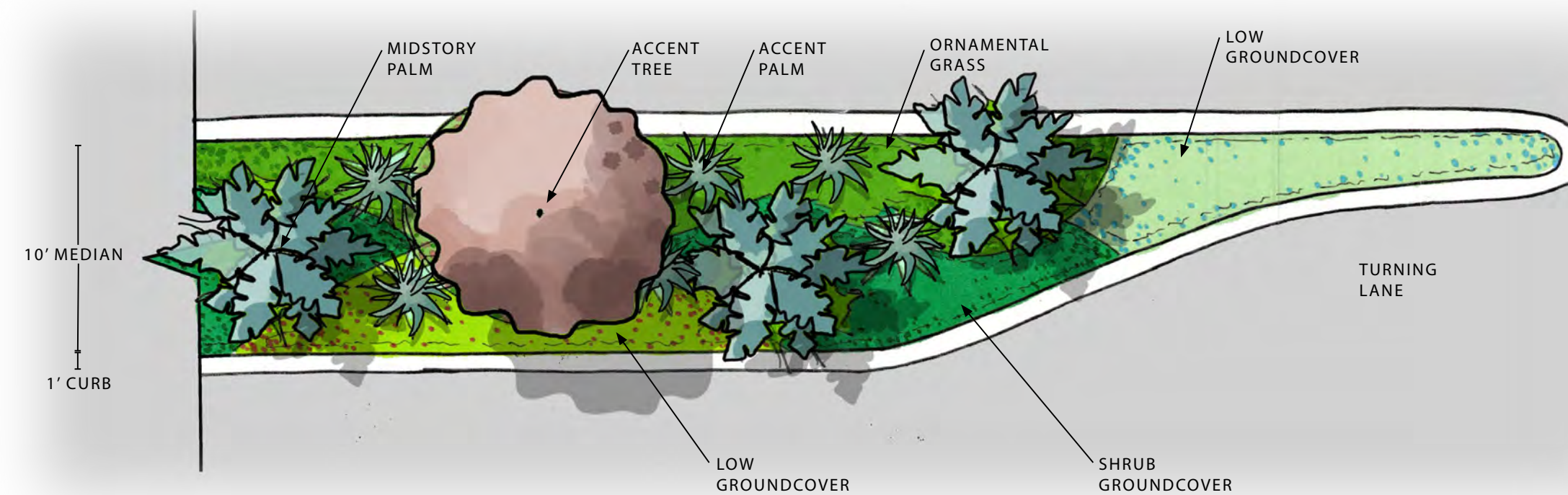


Fakahatchee Grass

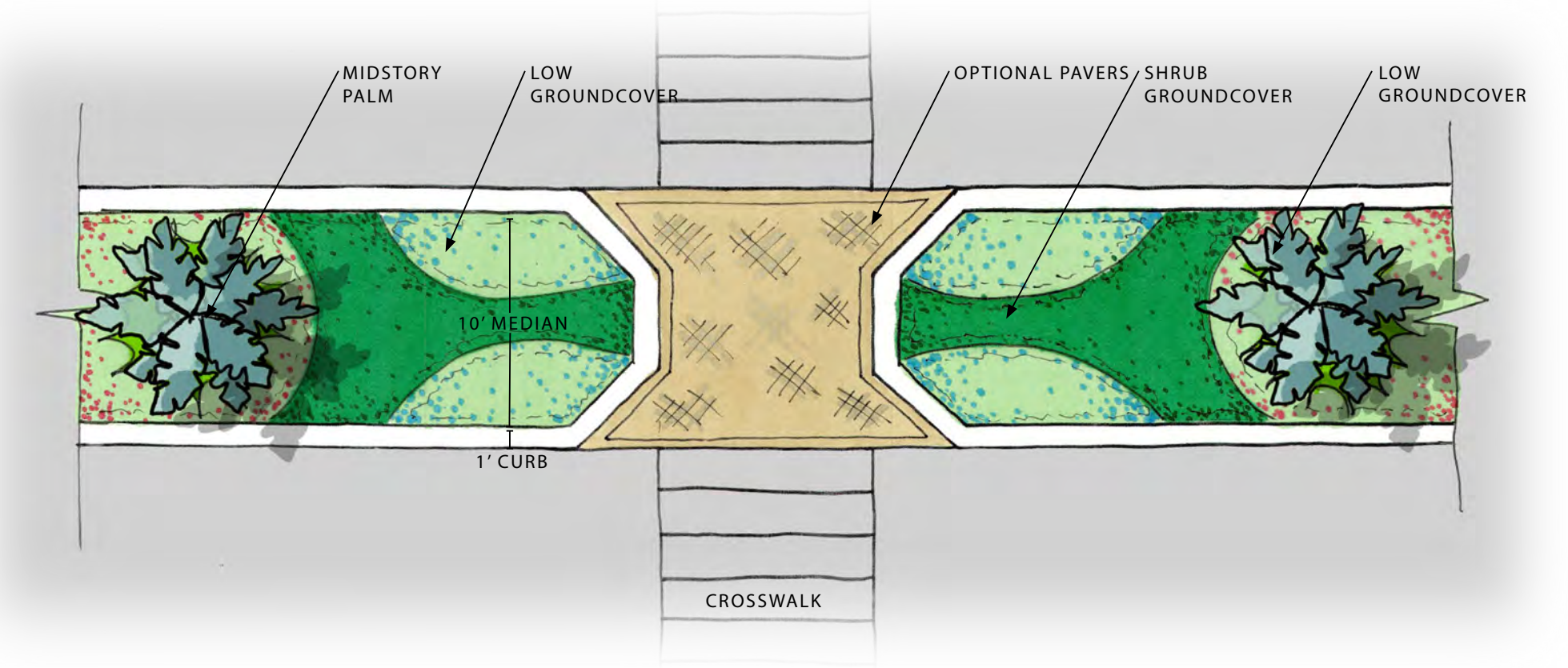
ZONE THREE



CONCEPTUAL ELEVATION



CONCEPTUAL TURN LANE MEDIAN



CONCEPTUAL CROSSWALK MEDIAN

03 PLANT PALETTE

**In collaboration with Naples Botanical Garden*

Canopy Trees



*White Geiger Tree



*Pigeon Plum



Japanese Blueberry



*Bahama Tabebuia



*Silver Thatch Palm



*Silver Saw Palmetto

Accent Trees



Orange Geiger Tree



Green Buttonwood



Satin Leaf Tree



Pink Tabebuia

Midstory Palm



Alexander Palm

Accent Palm



Triple Pygmy Date Palm

03 PLANT PALETTE

**In collaboration with Naples Botanical Garden*

Ornamental Grasses



Muhly Grass



Fakahatchee Grass

Shrub Groundcover



Coontie



*Horizontal Cocoplum



Dwarf Carissa



Petite Pink Oleander

Low Groundcover



*Blue Daze



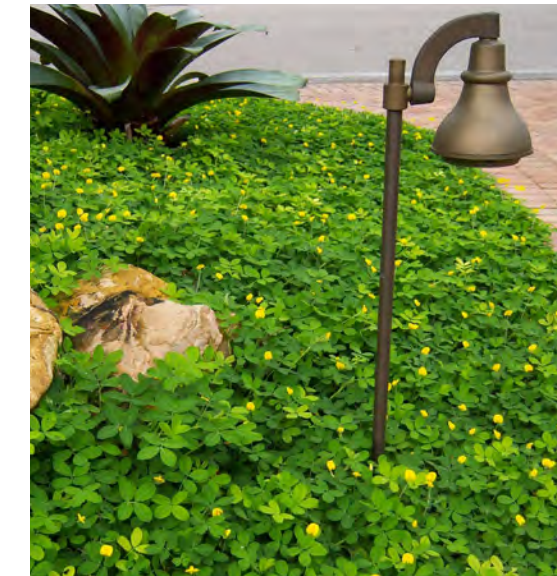
*Panama Rose



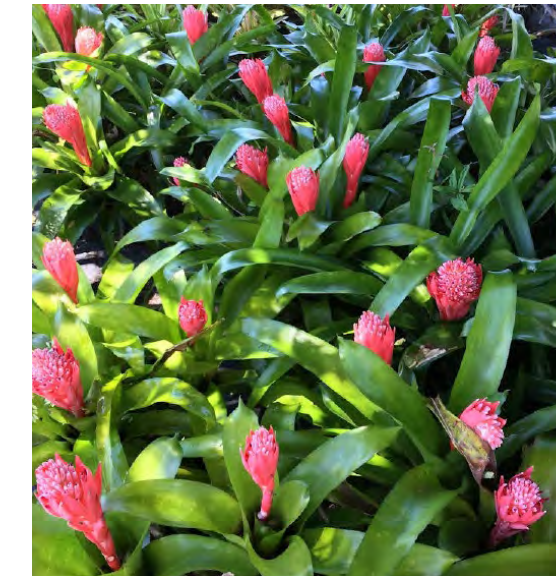
*Croton



Golden Creeper



*Perennial Peanut



*Bromeliad



Asiatic Jasmine

04 HARDSCAPE ELEMENTS





. RVI PLANNING & LANDSCAPE ARCHITECTURE . FT MYERS PUBLIC WORKS .

FT MYERS PUBLIC WORKS